

BladeNeedleSYSTEM

Blade Remover | Needle Counter

How to Use



EC REP

0 1 2 3

Donawa Lifescience
Consulting Srl
Piazza Albania, 10
00153 Rome, Italy



... and be safe

Clicksmart Pty Ltd.

Level 1, 148 Boundary St, West End,
Brisbane, QLD 4101, Australia
+61-7-3844-1182 T

hello@clicksmart.com | www.clicksmart.com

STERILE

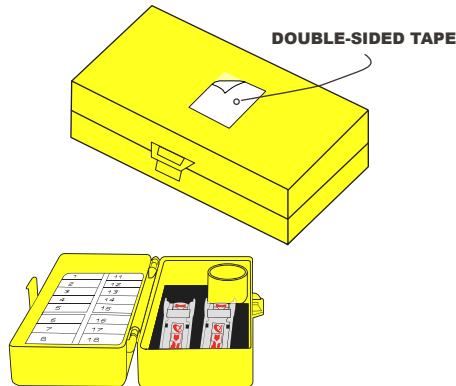


Dispose of as medical waste

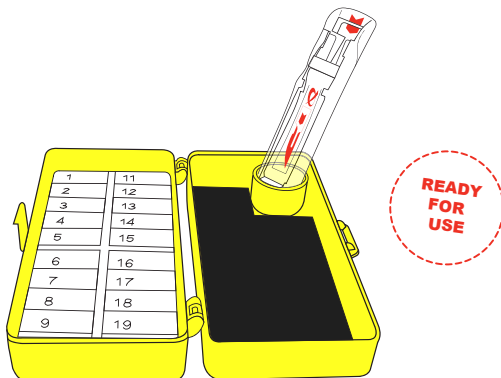
PREPARE

USING TWO HANDS:

1. Remove the sterile packaging and peel the double-sided adhesive tape. Open the BladeNeedleSYSTEM and secure the device to a surface.



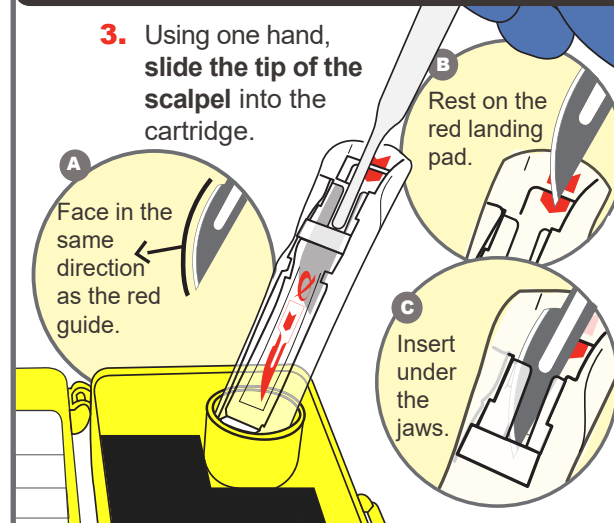
2. To remove a scalpel blade, place a cartridge into the round holder.



BLADE REMOVAL

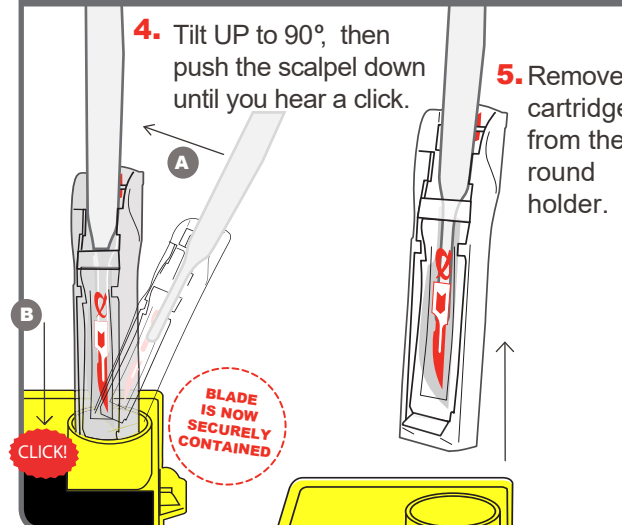
SINGLE HANDED:

3. Using one hand, slide the tip of the scalpel into the cartridge.



4. Tilt UP to 90°, then push the scalpel down until you hear a click.

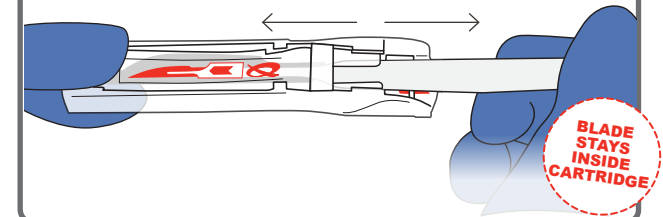
5. Remove cartridge from the round holder.



SAFE

TO USE TWO HANDS:

6. Using two hands, pull out the scalpel handle. The blade is now ready for counting.

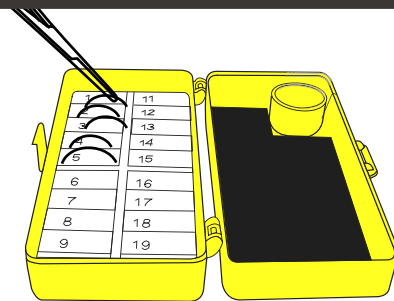


NEEDLE COUNTER

- 7.

Insert the used needles into the foam as required.

Larger needles can be placed on the flat magnetic surface.



DISPOSAL

8. Dispose of the needle counter and the cartridges separately into a sharps bin.

