

BladeFLASK

100 | Scalpel Blade Removal System

The world's first
single-handed
scalpel blade
remover.



www.clicksmart.com

 **CLICKSMART®**
... and be safe

The forgotten sharps injury

Scalpel injuries are up to 6 times more likely to occur than needlestick injuries. They are particularly common in surgical settings. Regrettably, healthcare organisations and personnel have underestimated the likelihood of these injuries.

Scalpel cuts can result in infections, blood-borne diseases and psychological distress. Serious injuries could require microsurgery to repair a digital artery, nerve and/or tendon.

Many such scalpel injuries can be prevented using the Qlicksmart **BladeFLASK**, the world's pioneering single-handed blade remover.



BladeFLASK allows all scalpel blade users to maintain their preferences for the standard metal handles.



BladeFLASK is simple to use with a quick "push, click, and pull" action to remove and contain used scalpel blades.



This easy-to-use solution provides a lower cost alternative to safety scalpels.



Used together with a hands-free passing technique, the BladeFLASK can prevent up to 5 times more injuries than a safety scalpel.



BladeFLASK has won multiple awards, which demonstrate its practicality and effectiveness in reducing scalpel injuries.



The Qlicksmart BladeFLASKs have safely removed over 70 million contaminated scalpel blades, and prevented up to 150,000 injuries around the world.

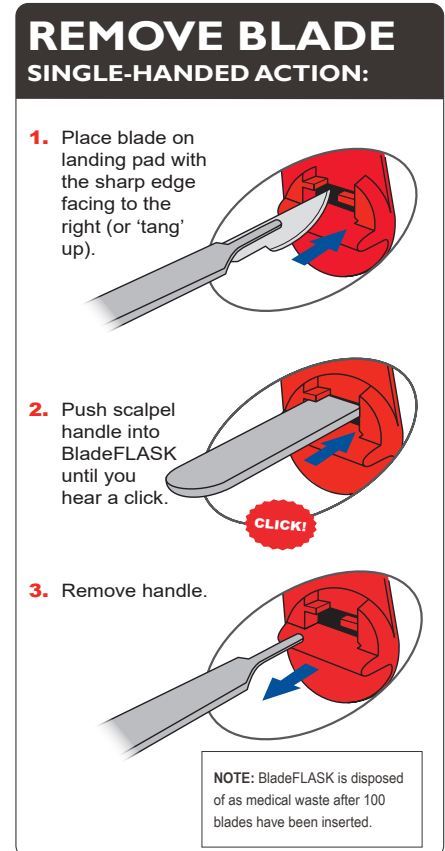
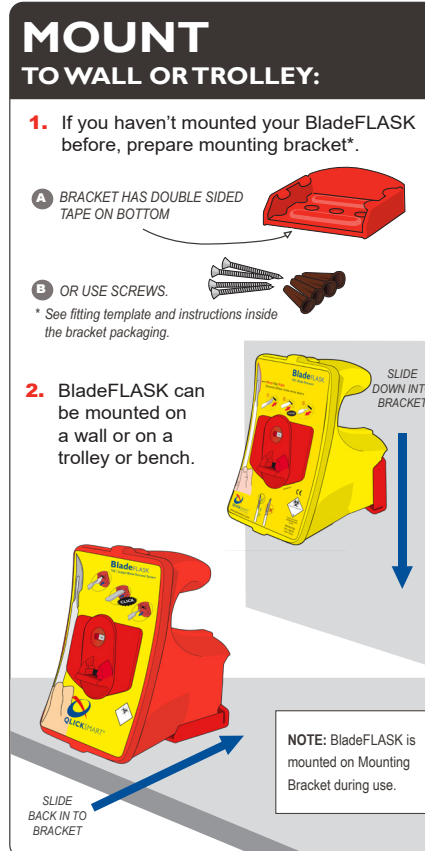
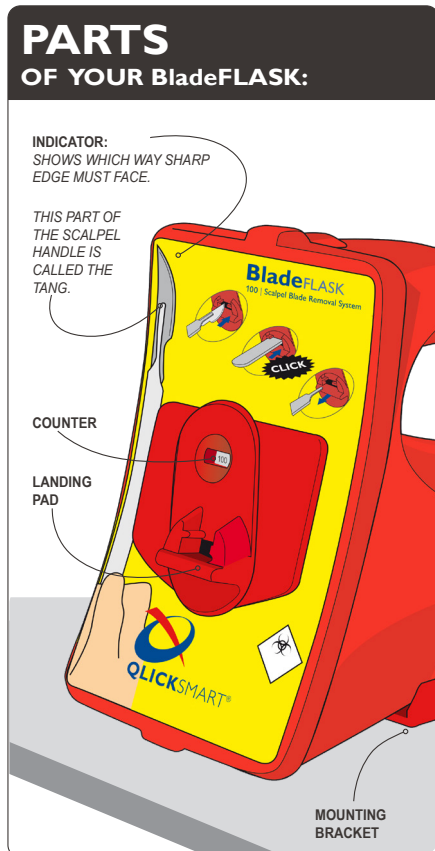


Specifications

Colour Versions	Red - USA Yellow - International
Product Code	QFRGEN - red version QFYGEN - yellow version
GMDN code	46235
Blade capacity	100 Blades - the BladeFLASK shuts off automatically when maximum capacity is reached.
Compatible Blades & Handles*	Handles: #3, 3L, 4, 4L, 7, 9, Lawton long handle. Blades: #10, 10a, 11, 12, 13, etc. up to and including #25a, 27, and 36.
Incompatible Blades & Handles	Baron handle, Beaver handle, disposable handles, thick and round handles, ergonomic handles
Size (per unit)	Length 11cm ,Width 9cm ,Height 14cm
Weight (per unit)	Approximately 250g.
Accessories	Mounting Bracket - the bracket holds the BladeFLASK in place to allow single-handed removal of scalpel blades.

Material	Body: Acrylonitrile butadiene styrene (ABS) Inner mechanism: Polyacetal (POM)
Latex	No
DEHP	No
Sterile	No
Re-usable	Multi-use - Each unit removes 100 blades before disposal.
Disposal Method	The infectious substance logo on the front label and the correct sharps container colour of the unit allow it to be disposed of as medical waste. Please follow your establishment's procedures for the disposal of medical waste.
Regulatory Information	Australia - Listed under TGA ARTG NO: 146821. USA - FDA 510(K) premarket approved #K983367 as a sharps container. Europe - Class I medical device under MDR 2017/745 and CE marked.

How to use BladeFLASK



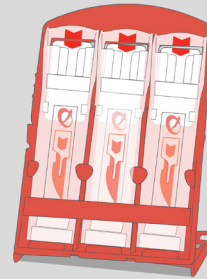
BFBI60505A5-US

Other Qlicksmart Products

BladeFlask EVO
Scalpel Blade Remover



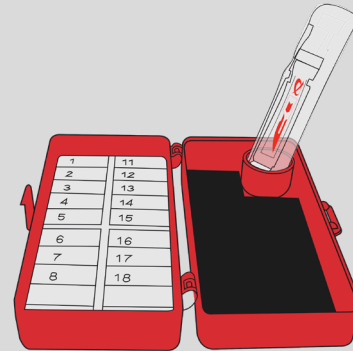
BladeCASSETTE Sterile
Scalpel Blade Remover



SnapIT and SnapIT Lite Ampoule Openers



BladeNeedleSYSTEM Sterile 2-in-1
Needle Counter + Blade Remover



CheckCLIP Medication Identification



About Qlicksmart

Qlicksmart Pty Ltd is committed to making healthcare professional's lives easier and safer, so that they can focus on patient care. Established in 1999 by two Australian physicians to combat scalpel cuts in hospitals, our award-winning safety devices are now being used in over 50 countries worldwide. Qlicksmart works with innovators from the healthcare sector to deliver solutions which target the overlooked concerns of nurses, surgeons, and healthcare facilities. To learn more about Qlicksmart's safety devices, please visit www.qlicksmart.com or ask your distributor for a demonstration today.

Qlicksmart Pty Ltd.



Level 1, 148 Boundary Street
West End, Brisbane
QLD, Australia 4101



+61 7 3844 1182



hello@qlicksmart.com
www.qlicksmart.com



Search "qlicksmart"
and stay connected



Scan the QR
Code to learn
more about the
BladeFLASK.



Distributed by: